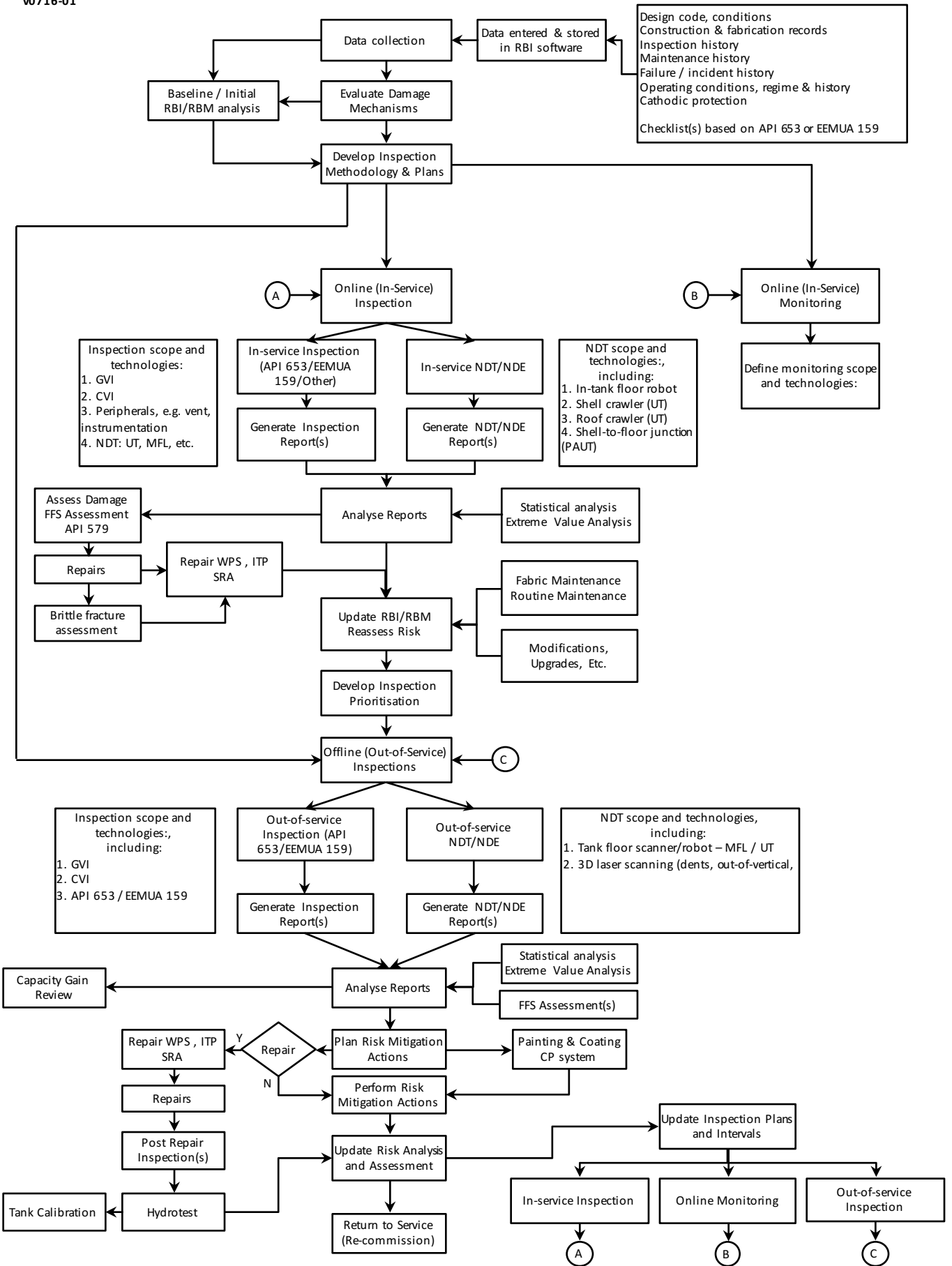


# STORAGE TANKS INSPECTION & ASSESSMENT

v0716-01



**In-service Inspection & Assessment)**

- API 653 /EEMUA 159
- RBI
- Damage mechanism review
- FMEA/FMECA
- Failure analysis
- FFS (API 579-1/ASME FFS-1)
- Cathodic protection
- UT crawlers (shell & roof)
- PAUT shell to bottom plate welds
- MPI/DPI shell to bottom plate external weld
- Settlement survey
- Multi-skip UT for critical zone (bottom)
- Guided wave monitoring of tank bottom (floor)
- UT immersion tethered robot for bottom plate
- Thickness measurements
- Visual inspection

**Out-of-service Inspection & Assessment**

- API 653/EEMUA 159
  - FFS (API 579-1/ASME FFS-1)
  - Floor scanner/robotic crawler (MFL/UT)
  - MPI/DPI welds
  - Vacuum box test welds
  - Visual inspection
- Other Services**
- Increased capacity program
  - Reduced inventory program
  - Repair specification and supervision
  - Post repair inspection
  - Tank calibration
  - Repair scope estimation (prior to removal from service)

